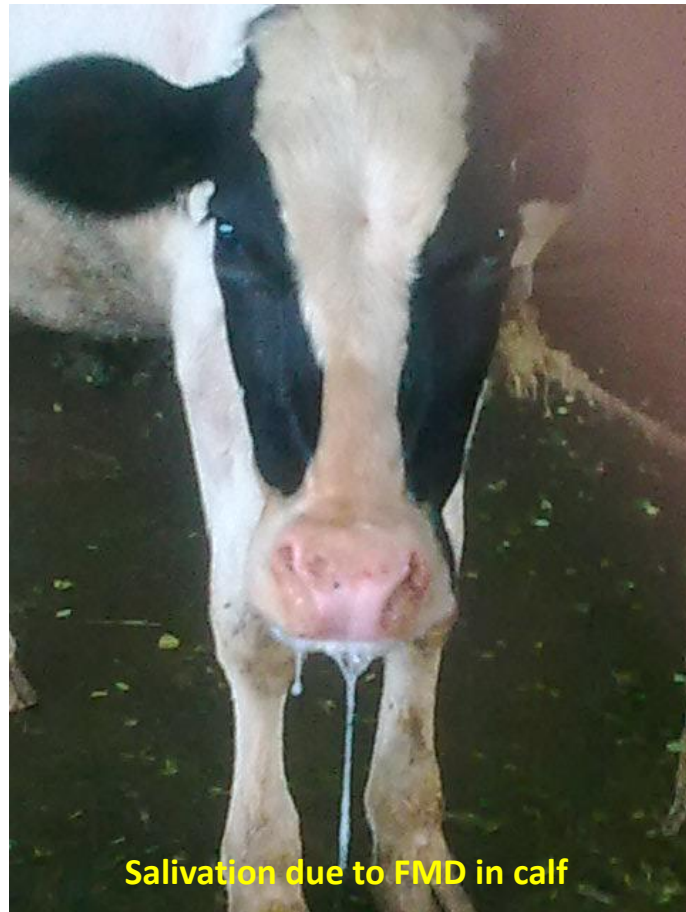


AICRP on Foot-and-Mouth Disease, Collaborating Centre Patna.

Department of Veterinary Microbiology
Bihar Veterinary College, Bihar Animal Sciences University, Patna

Title	All India Coordinated Research Project for Epidemiological study on Foot and Mouth disease
1. Year of start of project	16-11-2000
2. Principal Investigator	Dr Manoj Kumar
3. Salient achievements	<ul style="list-style-type: none">• The Project has reported, investigated and recorded 725 outbreaks of FMD throughout the Bihar state.• Collected a significant number of clinical specimens (1371) for initial virus serotyping out of which 970 samples were found positive (typeability = 70.75%)• The centre has successfully conducted DIVA test (15192) for determination of carrier status of animal, which contribute in disease incidence. A total of 4414 samples (29.05%) were positive and inferred that 29.05% of animals were virus reservoirs carrying FMD virus in their system.• Participated in National FMD sero-surveillance and herd immunity was determined. (27.78% against serotype O; 9.05% against serotype A and 6.27% against Asia 1).• A trained work force for undertaking FMD reporting and collection of clinical samples for diagnosis and seromonitoring was created across the state by imparting training veterinary officers and paravets working under department of Animal husbandry, Govt. Of Bihar, Veterinary officers of COMFED, JEEVIKA and KVKs on various diagnostic techniques.• A total of 39, FMD awareness camp, vaccination camp and animal health camps were organised at village level independently and in collaboration of other institution to aware the farmers and animal keepers to make them understand the FMD and its prevention through regular vaccination.
Future projections	Participation in FMD CP programme sponsored by DAHD&F, Govt. of India.



Salivation due to FMD in calf



Teat lesion in FMD infected animal



Teat lesion in FMD infected animal



Tongue lesion in FMD infected



Wound on tongue in FMD infected animal



FMD awareness programme for Self-help group of BRLPS



Surveillance of FMD in Sheep



Feet lesion in FMD affected pig