

## **Title: Experiential Learning Critical Care Unit**

- 1. Principal Investigator: Dr. Pallav Shekhar, Asstt. Professor, Veterinary Medicine**
- 2. Co Pi: Dr. Gyan Dev Singh, Asstt. Prof., Veterinary Clinical complex**
- 3. Year of Start: 2013-14**
- 4. Duration: One Year**
- 5. Budget: 99 lakh**
- 6. Utilization: All**

### **4. Objectives:**

1. Imparting Comprehensive hands on training and entrepreneurship development skills in the field of Critical care to undergraduate students.
2. Dissemination of emerging technologies and facilities in the field of critical care to all stakeholders viz Veterinary officers and private practitioners etc
3. Dissemination of emerging technologies and facilities in the field of critical care to all stakeholders viz Veterinary officers and private practitioners etc.

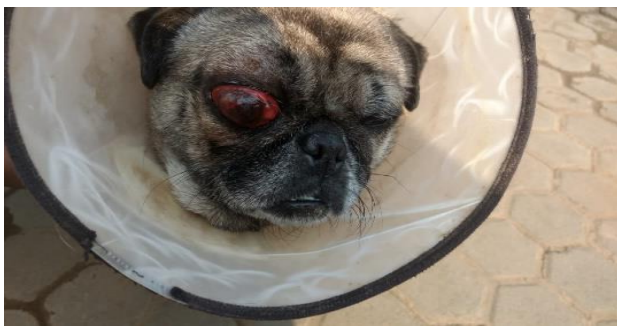
### **Silent Achievements:**

- a. Number of UG students trained in 2018-19: 33
- b. CEO, Managing Director and Manager Post of EL Project approved by Hon'ble Vice Chancellor, BASU vide letter no. 43/Dr Cell/BASU, Dated 28.8.2018
- c. Office Order number 285/BVC/CLF/Patna, dated 10/9/2018 passed for designation Managing director and Manager of the Project with financial power of 50,000 and 25,000, respectively.
- d. Post graduate research work completed: Two
- e. Training imparted in form of workshop: Three workshop completed for imparting training to undergraduate, post graduate and faculty of the clinical departments
- f. Faculty training
- g. Skilled developed in handling of critical care

**Faculty and students training**



### **a) Ocular emergency**



**Fig: Corneal ulceration in pug**



**Fig: Opacity of eye due to retinal damage**

### **b) Cardiac Emergency**

**ECG**



**Fig: ECG in dog**



**Fig: Dog showing severe ascites and anasarca due to congestive heart failure**

## Pericardial Effusion



**Fig: Diagnosis of Pericardial effusion and distended vein in liver Ultrasonography.**

### c) Renal emergency

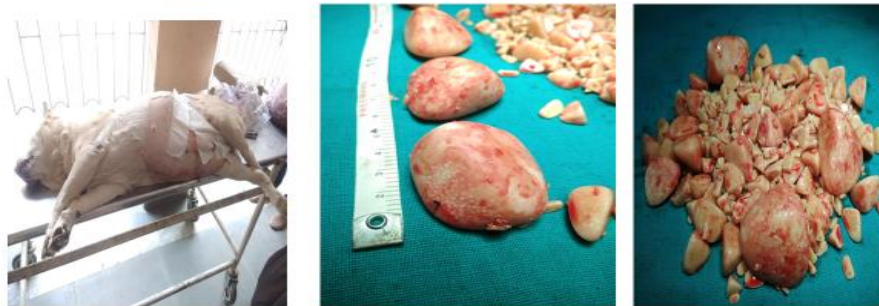


**Fig: Peritoneal dialysis in dog suffering from renal failure.**



**Fig; Cystolith in ultrasonography of urinary bladder**

**Fig: Emergency treatment of bladder stone**



**d) Abdominal emergency**



**Fig: Dog suffering from intestinal obstruction**



**Fig: Horse suffering from colic**



**Fig: Dog suffering from distended abdomen and emergency abdominocentesis.**

**e) Hepatic and splenic disorder**



**Fig: Dog suffering from petechial haemorrhage due to thrombocytopenia and hepatomegaly**

**f) Blood transfusion**



**Fig: Bleached mucous membrane in sheep suffering from anaemia due to Haemonchus contortus infection.**



**Fig: Open method of blood collection in cattle**



**Fig: Close method of blood collection in dog.**

## Blood transfusion in dog



**Fig: Blood transfusion in dog**

## g) Large animal Emergency Cases

Fig: Large Animal Emergency Cases



## h) Pregnancy diagnosis in small animals

PD

