



सत्यमेव जयते

Prevent the spread of Covid-19



Protective measures against coronavirus



If soap & water not available, **use hand sanitizer** with at least 60% alcohol

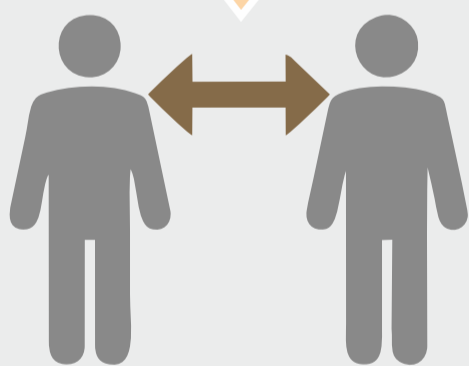


Avoid touching any surface



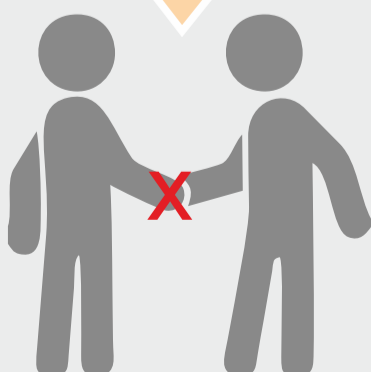
Wash/sanitize hands before touching eyes, nose and mouth

A distance of at least 1 metre is necessary to ensure safety for all



Cover your nose & mouth with flexed elbow or handkerchief/tissue while coughing & sneezing

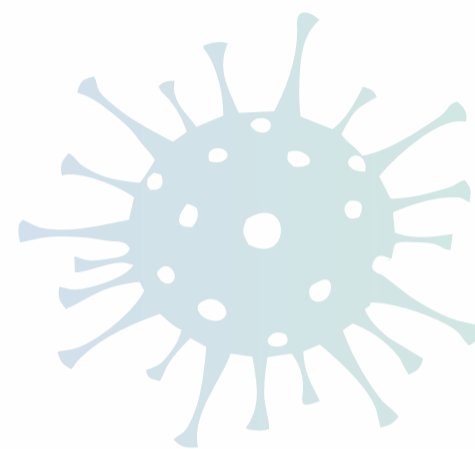
Avoid personal contact like shaking hands



Use face masks, gloves



Throw used tissues in closed bins immediately after use





सत्यमेव जयते

Prevent the spread of Covid-19

Milk producers/dairy farmers to follow a set of guidelines ensuring safety & hygiene



Dairy farm



Keep the shed/premise clean/hygienic & ventilated, avoid touching animals



Wash hands with soap & water before and after feeding & milking



Outsider/visitor not allowed



Utensils & equipments to be cleaned/sanitized frequently



Immediate transportation of milk to the collection point

Milk collection point



Do not spit or shout



Avoid touching any surfaces, railings etc



Sanitize hands before entry & wear mask



A safe distance of more than an arm's length (one metre) to be maintained between two persons



Return home immediately after pouring milk



Prevent the spread of Covid-19

Village milk collection centre/BMC/chilling centre to follow a set of guidelines ensuring safety & hygiene



1

A schedule of milk pouring to be defined (cluster, mohalla wise) to avoid crowding



2



Maintain a safe distance of more than an arm's length (1 metre) between two individuals (milk producers, personnel etc)

3



Wash hands with soap & water, use face mask



4

Putting in place hand sanitizer dispensers at the entry and exit of milk collection centre

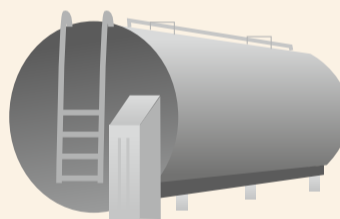


5



Separate entry and exit ways at milk collection points

6



Bulk Milk Coolers/CC must be cleaned following Standard Operating Procedures

7

Frequent cleaning of surfaces (e.g. desks and tables) and objects (e.g. telephones, keyboards, computers, mouse, AMCU etc.) using disinfectants



8

All equipment and machinery used for milk collection, preservation and dispatch to be cleaned/sanitized before and after use



9



Entry of drivers involved in milk transportation may be avoided in the BMC/chilling centre/milk collection point premises

10



Digital modes of milk receipts & payments to be promoted



सत्यमेव जयते

Prevent the spread of Covid-19

Dairy processing units to follow a set of guidelines ensuring safety & hygiene



Management level



Designate a Covid-19 contact person to communicate/coordinate



Identify isolation room or area for someone with Covid-19 symptoms and arrange safe transfer to designated health facility



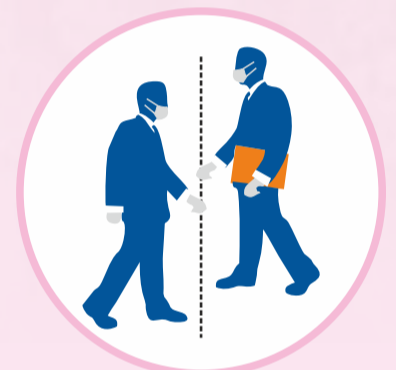
Continue to enforce regular GHP and control measures in HACCP system



Arrange hand washing & sanitization stations at all entrances to the factory/ office premises for all employees



Ease-off the procedures to purchase Covid-19 control related inputs (hand wash stations, soap, masks, sanitizers etc.)



Restrict inter-departmental movement of staff



Avoid exchange of physical documents and use digital tanker challan, QC clearance etc.



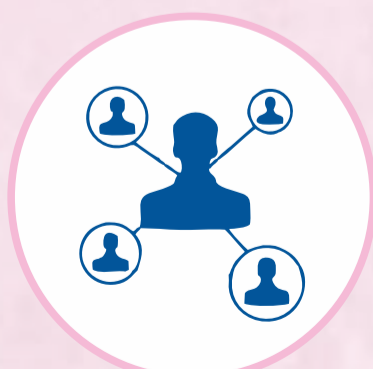
Allocate duties in a manner to avoid contact of same surface by multiple employees



Provide sanitized masks, slippers/shoes and aprons to the employees



Continue only the most critical activities



Maintain close liaison with the relevant local authorities



Periodically review the situation



सत्यमेव जयते

Prevent the spread of Covid-19

Dairy processing units to follow a set of guidelines ensuring safety & hygiene



Cleaning & sanitization



Wash hands with soap & water/sanitizer, use face mask



Cleaning & disinfection required



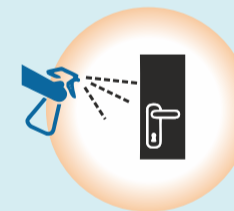
Periodically sanitize the dairy premises & approach road with sodium hypochlorite solution



Spillage of milk/product to be immediately cleaned followed with sanitization



Clean & sanitize all the common contact surfaces of furniture, equipment and other objects in office/plant at increased frequency



Clean/sanitize rest rooms, canteen, lockers/change rooms with increased frequency



Cleaning & sanitization procedure

Step-1

Cleaning



Always clean the surfaces prior to sanitization/disinfection



Step-2

Sanitization



Various commercial disinfecting solutions are available; follow label directions (dilution, contact time etc.). If not, a freshly prepared bleach solution (0.5% free chlorine) may be used



Step-3

Disposal



Place all used gloves, tissues and other disposable items in a bag that can be tied/closed for disposing



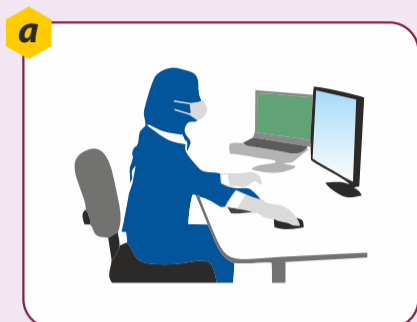
सत्यमेव जयते

Prevent the spread of Covid-19

Dairy processing units to follow a set of guidelines ensuring safety & hygiene



Reception & dispatch dock



Disinfect the physical documents (challan etc.) presented by the delivery personnel



Avoid touching vehicle surfaces



Wash hands with soap & water/sanitizer, use face mask



Drivers & cleaners of pick-up or delivery vehicles should not be allowed beyond a certain point, Separate hand washing facilities & utilities to be arranged for them



Clean the road milk tankers (outer barrel surface, main hole, hose pipe etc.)



Sanitize tanker valves before unloading



Clean outer surface of cans before emptying



Freshly received stock like packaging materials etc. to be stored separately, Disinfect the outer package before opening.



Use **clean/disinfected gloves** to handle milk & milk products

The staff/officers involved in material reception or dispatch **not to enter production area** & non-packaged product handling areas

Sanitize milk crates & trolleys



Prevent the spread of Covid-19

Dairy processing units to follow a set of guidelines ensuring safety & hygiene



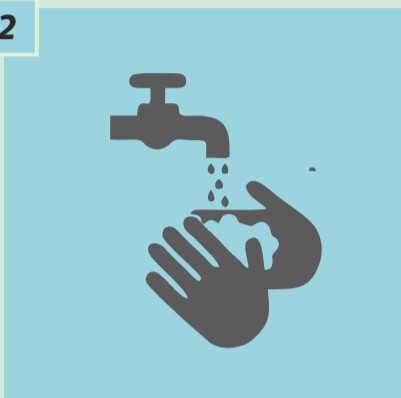
Personnel hygiene

1



Avoid personal contact like shaking hands

2



Practice hand washing with soap & water for 20 seconds ➤

- When entering the dairy / production area
- When hands are visibly soiled
- After accidentally touching face, hair, cell phone and/or clothing
- After using the restroom
- After using shared equipment and supplies
- Before handling food
- Before and after eating
- After sneezing, coughing, or nose blowing

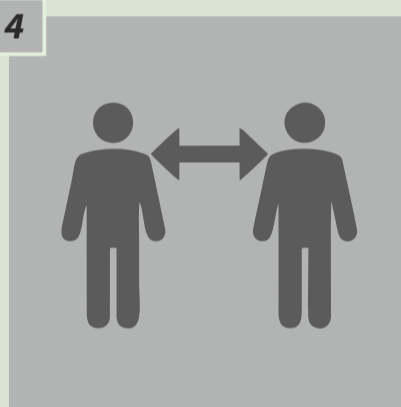
3



Practise hand sanitization

20 seconds hand rub with a sanitizer containing at least 60% alcohol or other appropriate sanitizer; avoid chlorine-based disinfectants for hands as it may cause dermatitis on repeated use

4



Practice social distancing, Reset seating arrangement of meeting rooms to promote physical distancing.

5



Dispose of soiled tissues immediately & only in designated bins





Prevent the spread of Covid-19

Cattle feed plant personnel to follow a set of guidelines ensuring safety & hygiene



1

Wash hands with soap & water / sanitizer before entering the plant



2

Use face masks, gloves while inside the plant



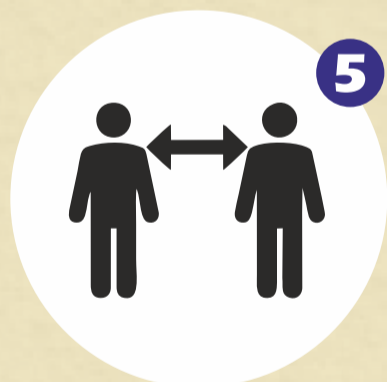
3

Allow truck drivers & helpers inside plant only after **thermal screening**



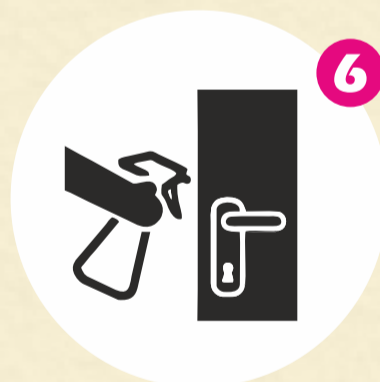
4

Spraying/ fogging of the truck with sodium hypochlorite solution



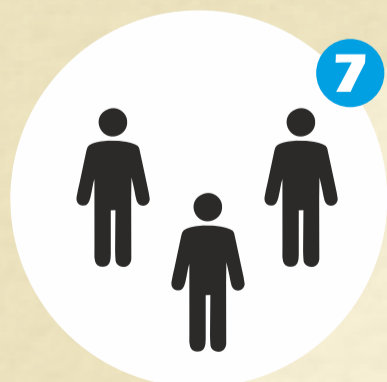
5

Keep minimum distance and avoid physical contact while working inside the plant



6

Clean & sanitize the laboratory, production and dispatch area regularly



7

Optimise the number of staff to essential operations only

Cattle feed supply

only one person allowed at a time





Prevent the spread of Covid-19

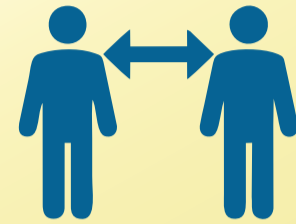
Depots/Branch Offices/Wholesale Distributers/Retailers
to follow a set of guidelines ensuring safety & hygiene



*Prohibit non-essential
visitors in the premises*



*Avoid gatherings,
meetings & travels*



*Practice social distancing, maintain
a safe distance of more than
one metre between two persons*



*Thermal screening at
entrance essential*



*Provide sanitized masks, aprons &
slippers at entry point*



*Wash hands with soap &
water or use hand sanitizer*



*Sanitize approach road, common
areas & waiting hall with sodium
hypochlorite solution*



*Equipment to be sanitised regularly
with sodium hypochlorite solution*



*Communicate
through digital means*



*Digital modes of payments
& receipts to be promoted*



*Drivers & pick-up vehicles should not
be allowed beyond a certain point*

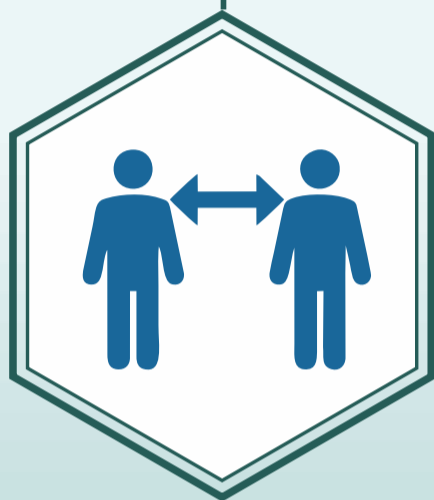


*Fresh material & new arrivals
should be stored separately,
shelves to be sanitized periodically*



Prevent the spread of Covid-19

Consumers to follow a set of guidelines ensuring safety & hygiene



Practice social distancing, maintain a **safe distance of more than one metre** between two persons



Avoid touching eyes, nose & mouth



Use face masks



While coughing & sneezing, **cover mouth and nose** either with flexed elbow or tissue papers



Sanitize hands & wash milk pouches with water after reaching home



Digital modes of payments & receipts to be promoted

