

GENUS : AMBLYOMMA

Morphology , Lifecycle , Pathogenesis
, Prevention & control



DR.R.K.SHARMA

Deptt. of Vety Parasitology



Amblyomma maculatum

SOURCE - GOOGLE

DR.R.K.SHARMA



Amblyomma americanum

SOURCE - GOOGLE

DR.R.K.SHARMA



Amblyomma variegatum

SOURCE - GOOGLE

DR.R.K.SHARMA

Deer, coyote, dog, cattle,
horse, man, raccoon, etc.

Adult

Adult

Eggs

Molt in 3 weeks
to several months

Eggs hatch in
21 to 50 days

Engorge in 6 to 14 days

Life cycle of the Lone Star Tick

Nymph

Engorge in 3 to 8 days

Larva

Engorge in 3 to 9 days

Molt in 3 to 14 days

Revised by M. Gahan, M. Suther, L. Jurek
Graphic by Patrick Hochberg

Life cycle : Amblyomma



Source and transmission of Q fever

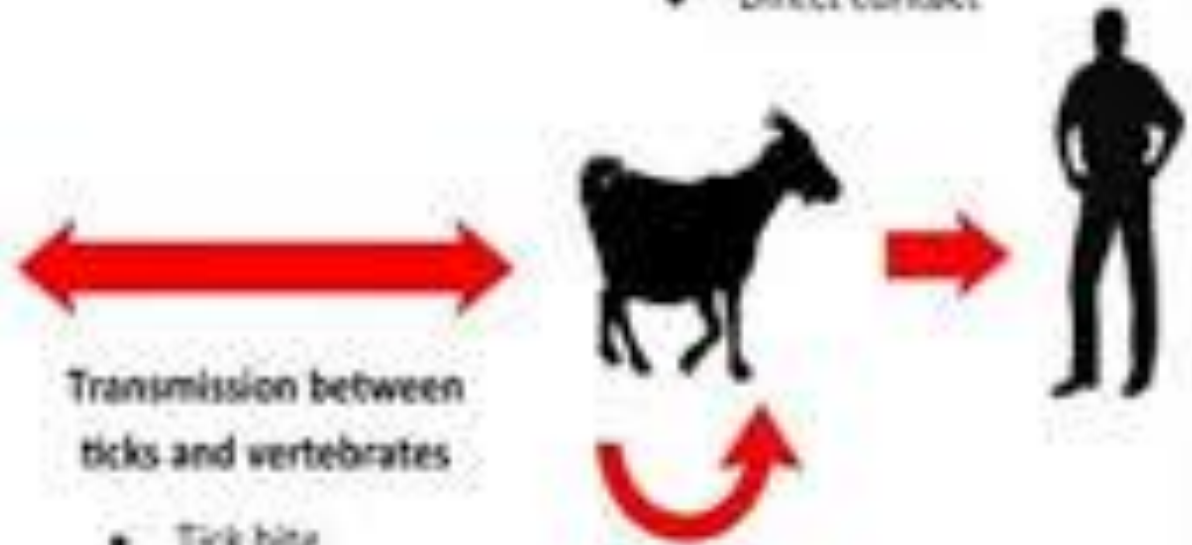
Transmission among ticks

- Transovarial
- Trans-stadial



Transmission among vertebrates

- Aerial
- Direct contact



Transmission between ticks and vertebrates

- Tick bite
- Tick feces

Coxiella burnetii (Q fever)

Transmission of Q- fever



Lesion of Q- fever in ruminants

SOURCE - GOOGLE

DR.R.K.SHARMA



Glandular Tularemia

Tularemia

Tularemia can affect the body through insect bites or direct contact with an infected animal. This disease is extremely contagious and can be potentially life threatening if not diagnosed early and treated.



Tick

ePainAssist.com

Symptoms : Tularemia