



Gross Anatomy of Small Intestine of Ox

DIRECTED BY – DR MANOJ KUMAR SINGH
UNIT - 5

Intestine

It is the largest part of alimentary canal extends from pylorus to anus. It lies mostly to the right of median line and is kept attached by common mesentary. It consists of two parts— small and large intestine.

- Small intestine : It starts from pylorus and terminates at the ileocecal orifice. The length is about 40 meters and diameter is about 5-6 c.m




It consists of a *fixed part and a mesenteric part*


- The fixed part is known as duodenum and mesenteric part, which again subdivided into jejunum and ileum


Duodenum

- The duodenum is about 1m long. It begins at the pylorus at the ventral end of the 10th rib
- The *first part* passes upwards to the visceral surface of the liver. Here it forms a 'S' shaped curve
- The *second part* runs backwards to the tuber coxae where it turns forward forming the iliac flexure.

- 
- The *third part* extends forward in contact with the terminal part of the colon and joins the mesenteric part
 - It is attached to the liver by the lesser omentum, and the rest part by the *mesoduodenum* -a narrow fold derived from the right layer of the mesentery

- The bile duct opens into the convexity of the ventral part of the 'S' shaped curve
- The pancreatic duct opens about 30 cm behind the opening of bile duct.
- Jejunum (38 meter) : It is the largest part of the small intestine, and comprises of a good number of coils, attached at the border of mesentery. These close coils are and dilated and formed u shaped tubular loops by the attachment of the mesentery.

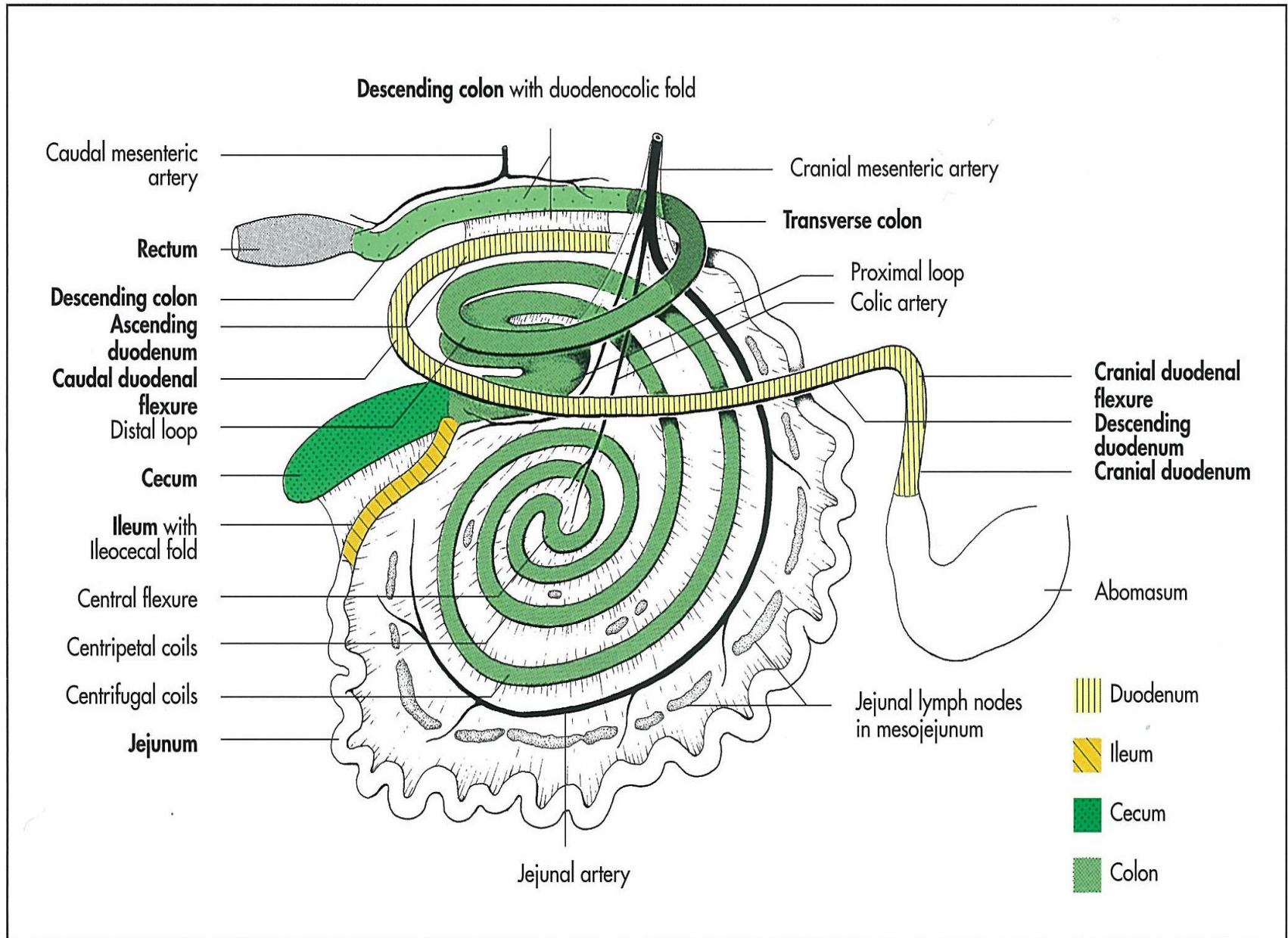
- 
- Jejunum is the mobile part of the intestine.
 - It occupies space bounded medially by the right face of the rumen and laterally by right abdominal wall below the large intestine and in front the terminal part leaves the edge of the mesentery runs forwards between the caecum.

- 
- The blood vessels of the jejunum are arranged in few layers of arches in the mesentery.
 - Straight vessels connect the loop of jejunum with the convexity of vascular arches.

Ileum (1 meter)

- It is the terminal part of small intestine and a thick tube.
- It is attached with cecum at its cranial part.
- It terminates at the medial surface of the cecum at the cecocolic junction.
- The ileum is the thickened uncoiled terminal part of jejunum.

Intestine of ox



- The mesentery is a *fan-shaped double peritoneum* containing the vessels and nerves to the intestine
- The visceral border is attached to the intestine and contains the mesenteric lymph glands while the parietal border or root is attached to a small area around the cranial mesenteric artery under the first and second lumbar vertebrae .



THANKS