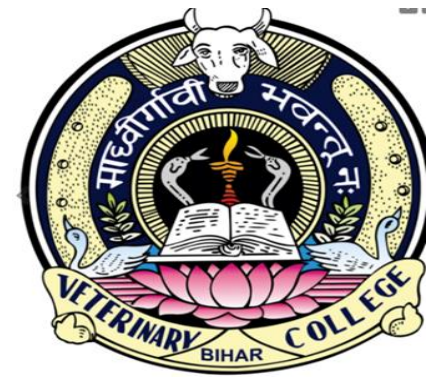




बिहार पशु विज्ञान
विश्वविद्यालय

BIHAR ANIMAL SCIENCES
UNIVERSITY



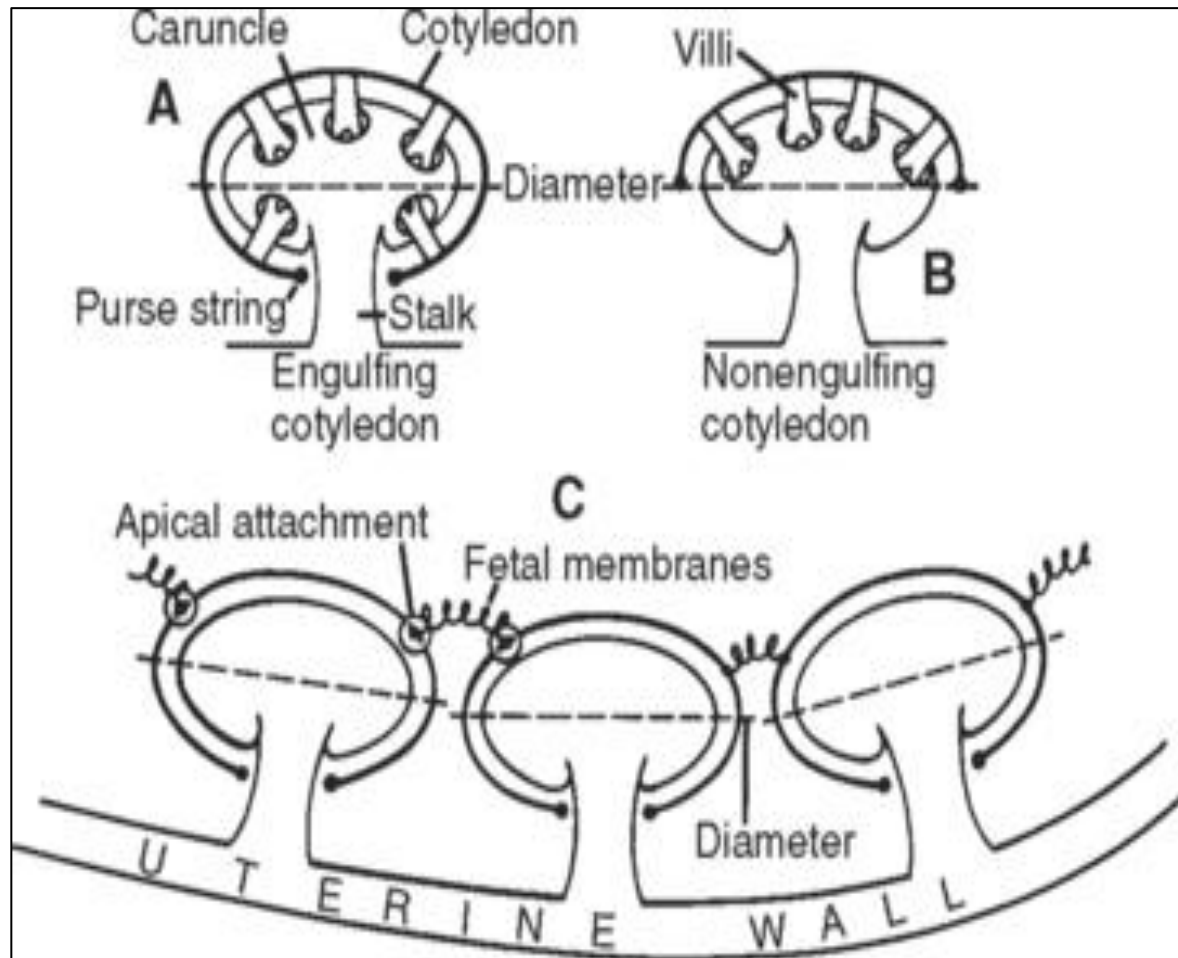
Handling and Management of Retention of Placenta

VCP II

Dr Ankesh Kumar
Department of Veterinary Clinical complex, BVC, Patna

Predisposing factors

- Premature birth
- Twins- are usually premature
- Heat stress
- Placentitis
- Uterine inertia due to dropsy of foetal membrane
- Deficiency of Vit. 'E'



- ❑ Retention of fetal membranes, or retained placenta, usually is defined as failure to expel fetal membranes within 24 hr. after parturition.
- ❑ Normally, expulsion occurs within 3–8 hr. after calf delivery. The incidence in healthy dairy cows is 5%–15%, whereas the incidence in beef cows is lower.
- ❑ The incidence is increased by abortion (particularly with brucellosis or mycotic abortion), dystocia, twin birth, stillbirth, hypocalcemia, high environmental temperature, advancing age of the cow, premature birth or induction of parturition, placentitis, and nutritional disturbances.
- ❑ Cows with retained fetal membranes are at increased risk of metritis, displaced abomasum, and mastitis.

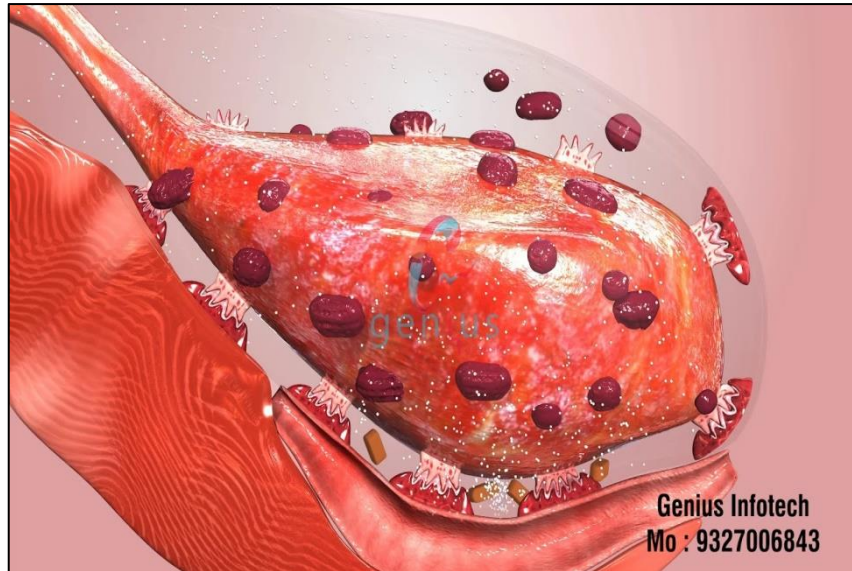
RFM can be avoided if the following Prophylactic measures are adopted

- During 8th month pregnancy in cattle and 9th month pregnancy in buffalo feed germinated horse gram after germination. It has to be grinded, cooked by adding salt/ Jaggery and fed along with the water used for cooking the gram. The germinated gram is fed increasing quantity; 1/4, 1/2, 3/4, and 1 kg per day for 15 to 20 days
- Injecting 150mg of sodium selenite and 500 mg of Vit E intramuscular 21 days prior to calving. If injectable are not available 150mg of Sodium selenite can be fed orally and 400mg of Evion capsule 3 nos are fed for 8 days
- Shifting of animal 5 to 10 days prior to calving to nearing parturition state where partition are made and each animal can see the other animals
- Allow animal to move freely in an open space for about an hour or advise two km of walk as exercise
- Feeding mineral mixture containing iodine, sodium selenite in addition feeding vitamin A (Green grass/hay and Vit E). If good quality legume grass or gram are fed selenium get supplemented easily
- Inj. 30-50 IU of oxytocin after calving can be repeated same day 1 to 2 more time

Treatment

Note: manual removal of placenta caused delayed involution of uterus, uterus getting infected for longer period, more money spent on treatment, more number of service per conception, prolong calving interval

- Manual Removal is contraindicated, not attempted if fever is present
- Ecbolic agent – Inj.PGF2alpha & Oxytocin less beneficial; inj. Oestrogen 3-5mg may also be tried
- Intrauterine broad spectrum antibacterial daily for 7 days
- Antihistaminic – Inj. Avil 5ml may be given by I/M route
- Liver extract & B-complex may be given



Genius Infotech
Mo : 9327006843

