

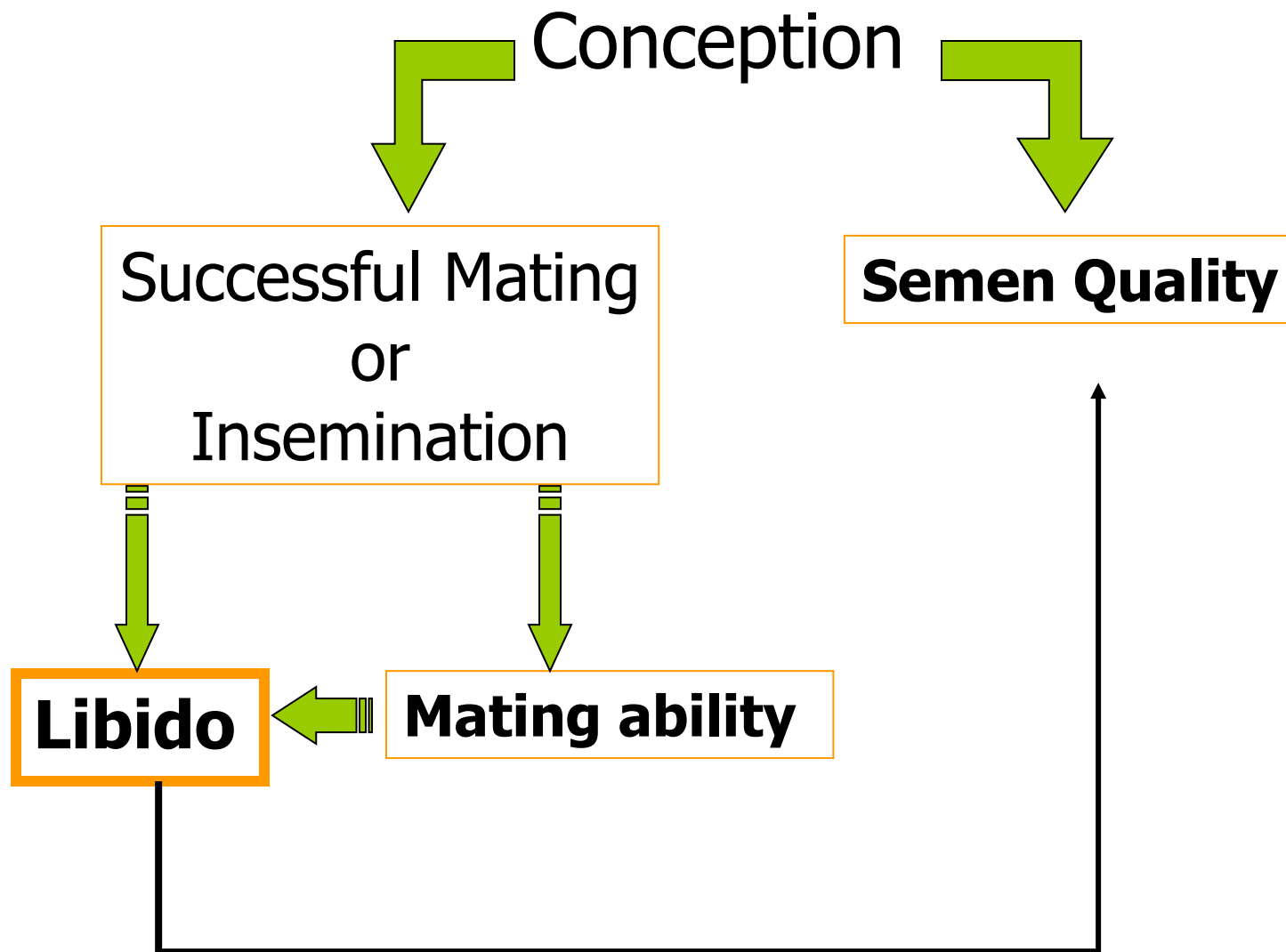
# Factors affecting libido of Breeding Bulls

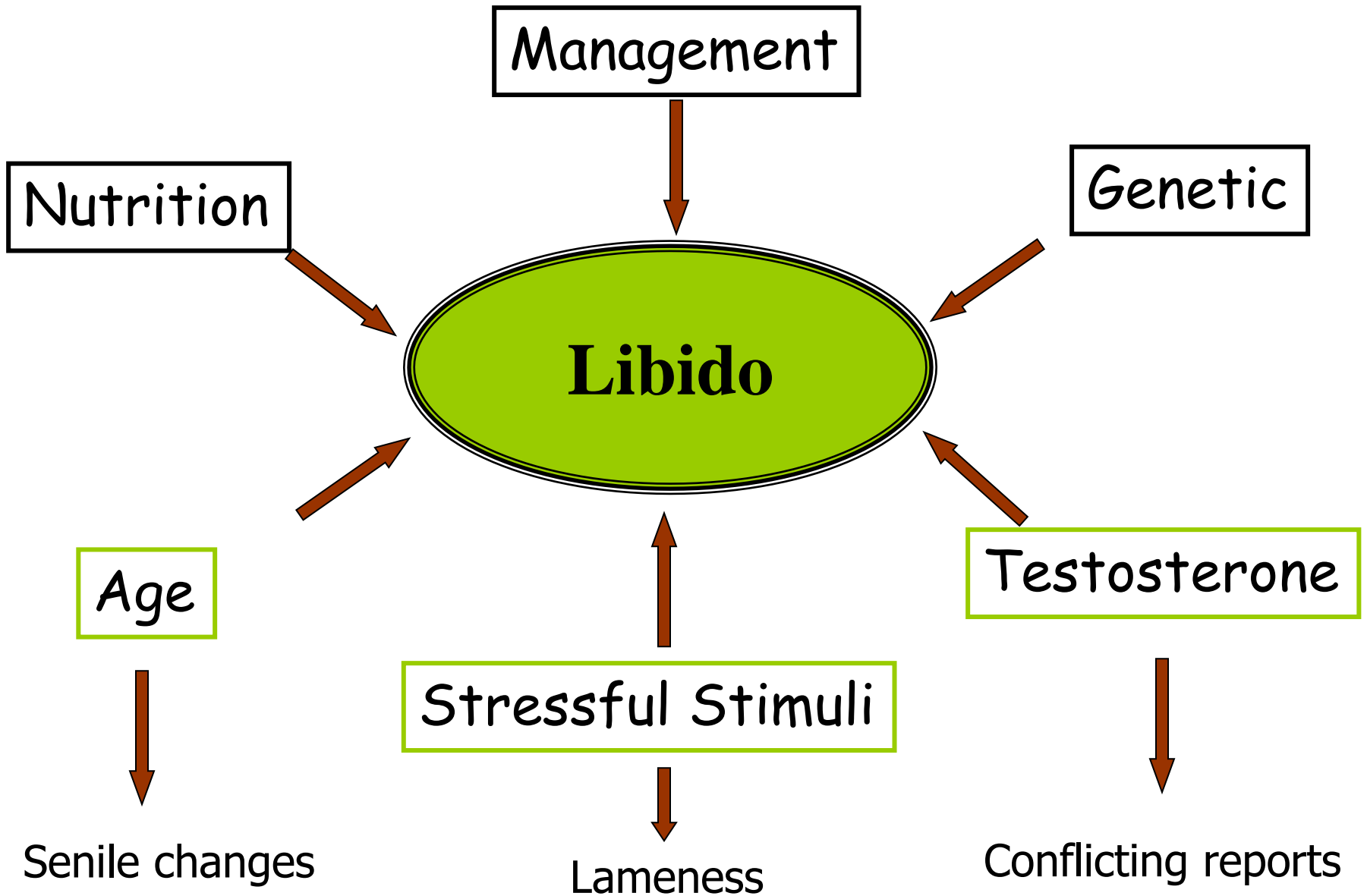
# Libido

**Service ability**

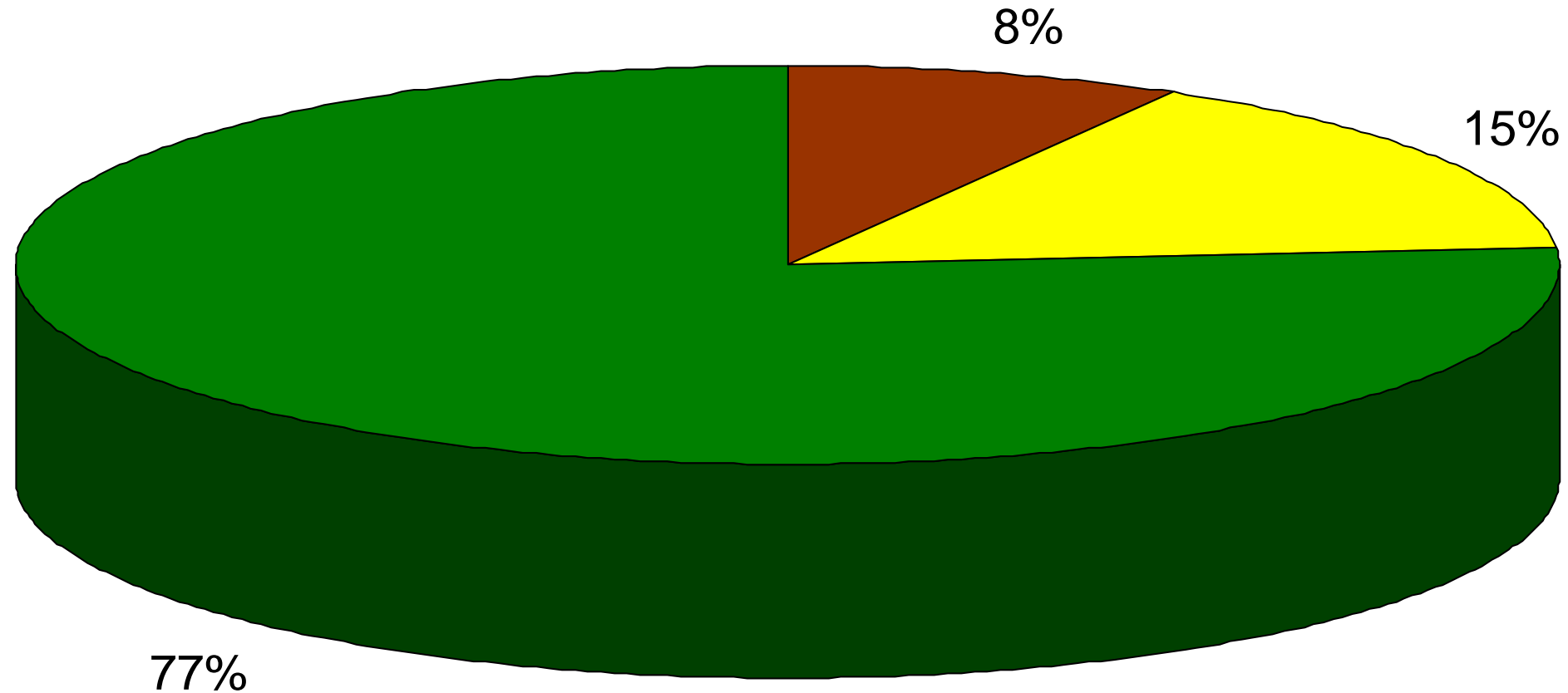
**Libido / Sex drive – Eagerness / Willingness to mate**

**Mating ability – Capability to mate**



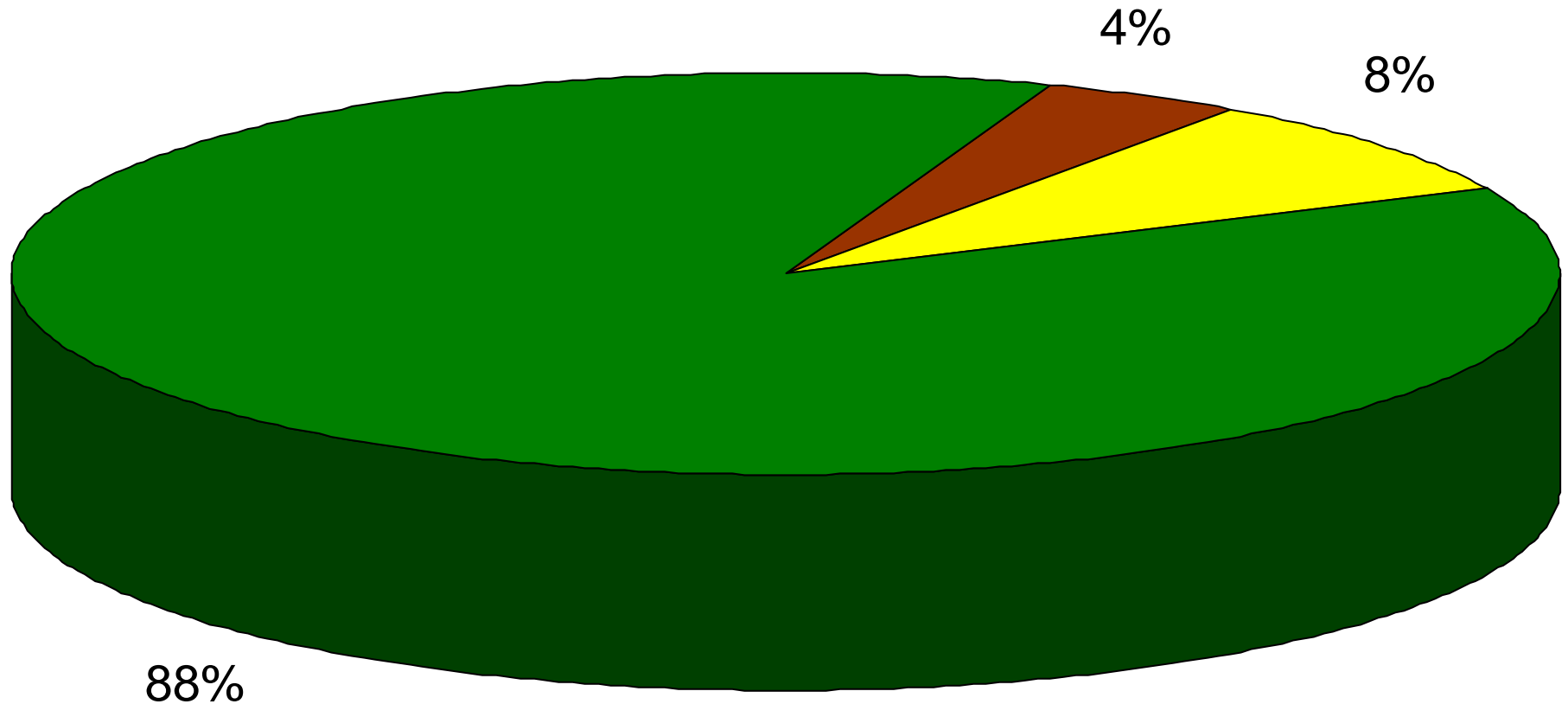


# Incidence of Poor libido Bulls (n=84)



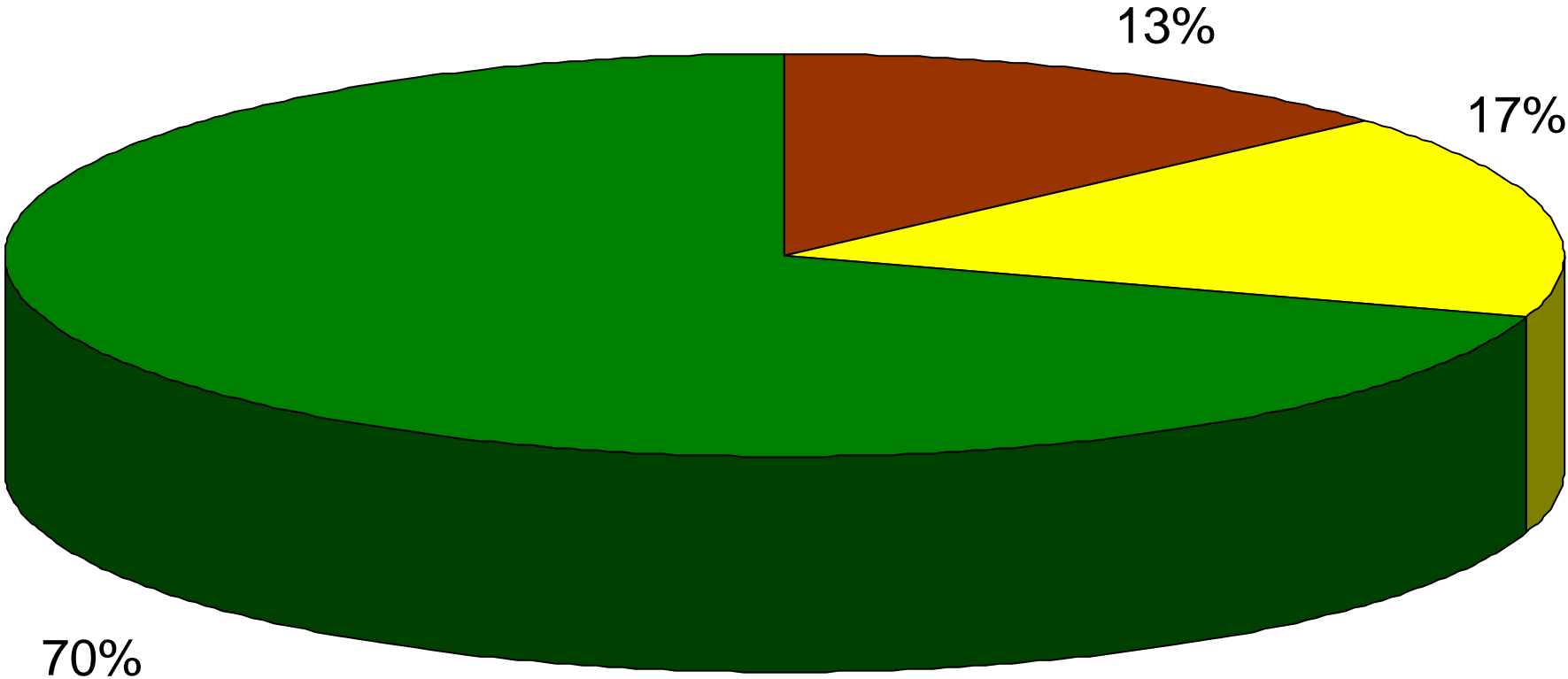
# Incidence of Poor libido Bulls (< 5 yrs)

n = 24



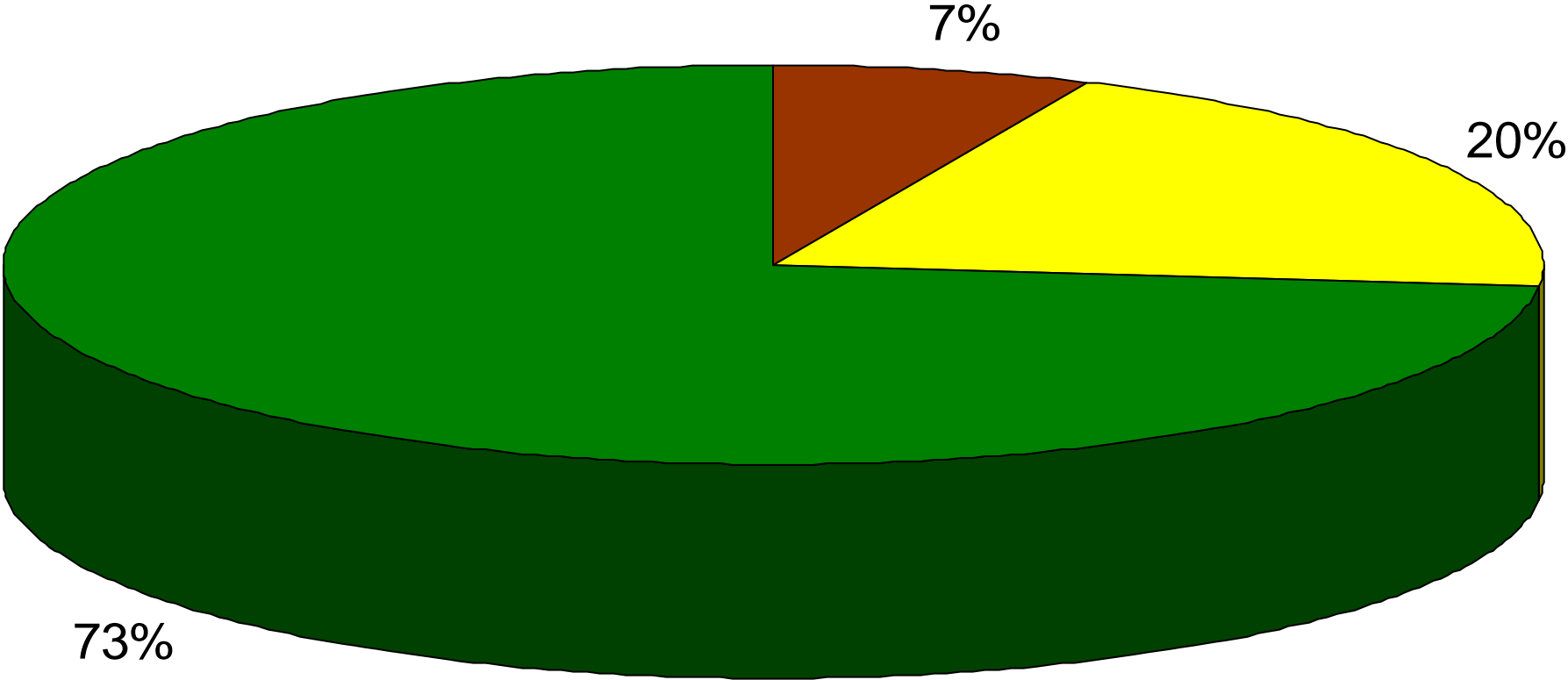
# Incidence of Poor libido Bulls (5 -10 yrs)

n=30



# Incidence of Poor libido Bulls (>10 yrs)

n=30





# Structural soundness

- General health

- Ophthalmic

- Olfactory

- Auditory

- Musculoskeletal

Eyes

Nose

Ear

**Sexual arousal**

Limbs, joints, vertebral column

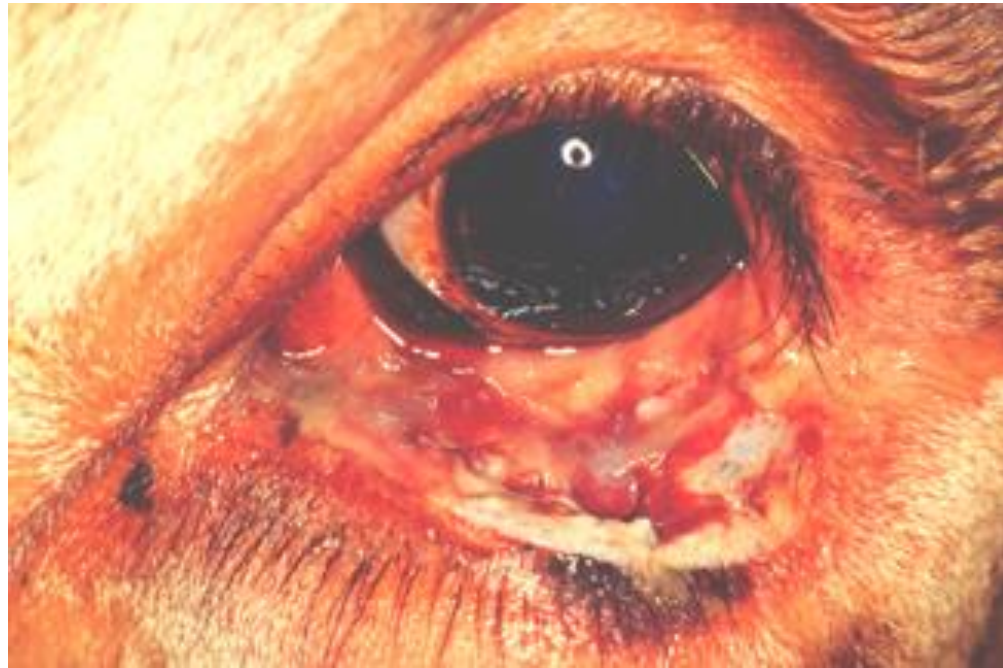
# Structural soundness contd...

## EYES

### Visual Stimulation – SEXUAL AROUSAL



**An early growth of squamous cell carcinoma on cornea**



**An invasive squamous cell carcinoma**

# Structural soundness contd...

## Olfactory system

- Biostimulation : Pheromones
- Nose : free from foul discharge or lesions
- The respiratory rate should be normal

## Auditory system

- Perfect ear : vocal sound perception

# Structural soundness contd...

## MUSCULOSKELETAL / LOCOMOTOR SYSTEM

The feet should be free of

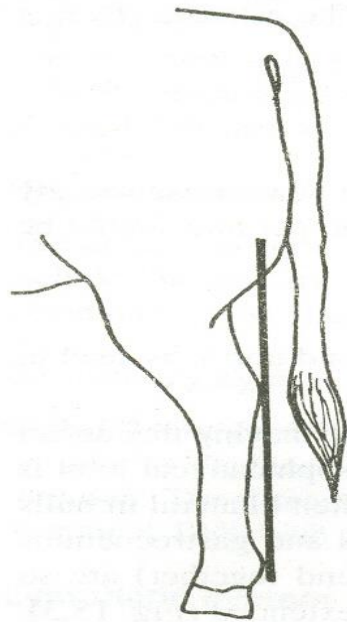
- Interdigital fibroma
- Abscess
- Foot rot
- Abnormal hoof growth
- Joint luxation
- Arthritis
- Nonspecific lameness

Vertebral Injury

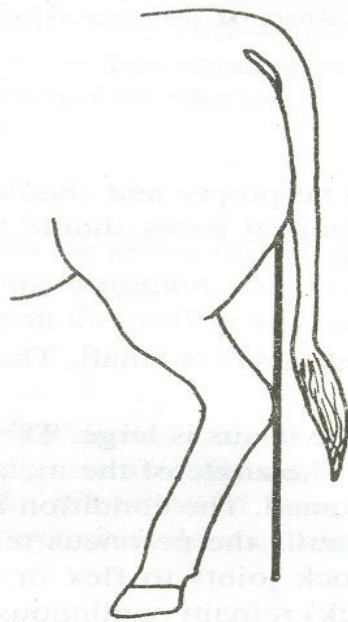
Mounting with neck



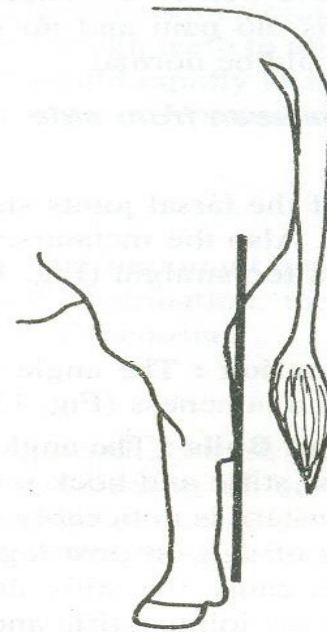
# Structural soundness contd...



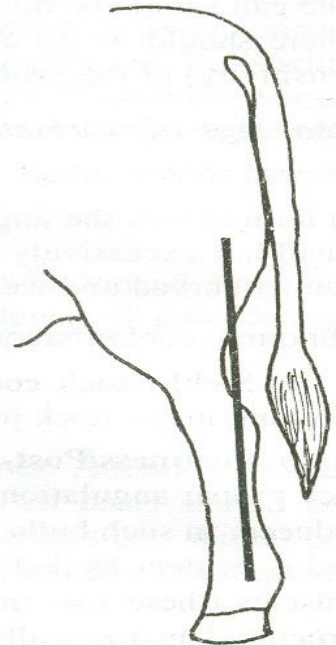
**Normal**



**Sickle hock**



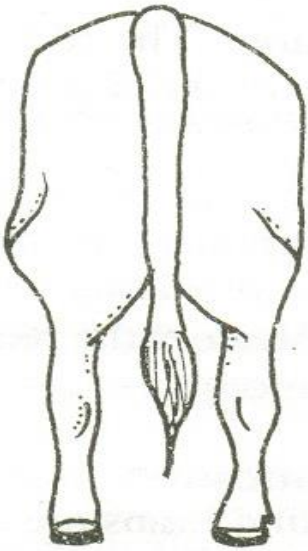
**Post legged  
(Postiness)**



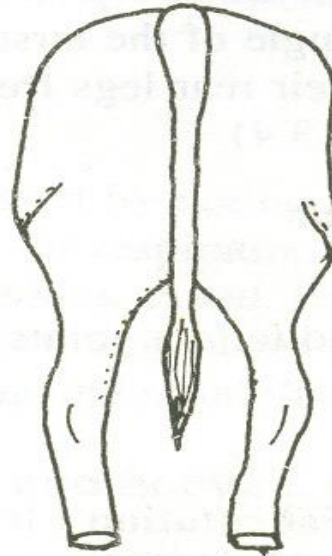
**Camped behind**

**Side View**

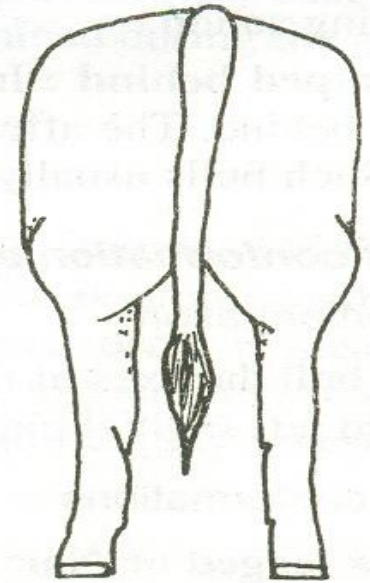
# Structural soundness contd...



**Normal**



**Bow legged / Narrow base  
Medial rotation**



**cow hocked / Wide base/  
Toed out stance**

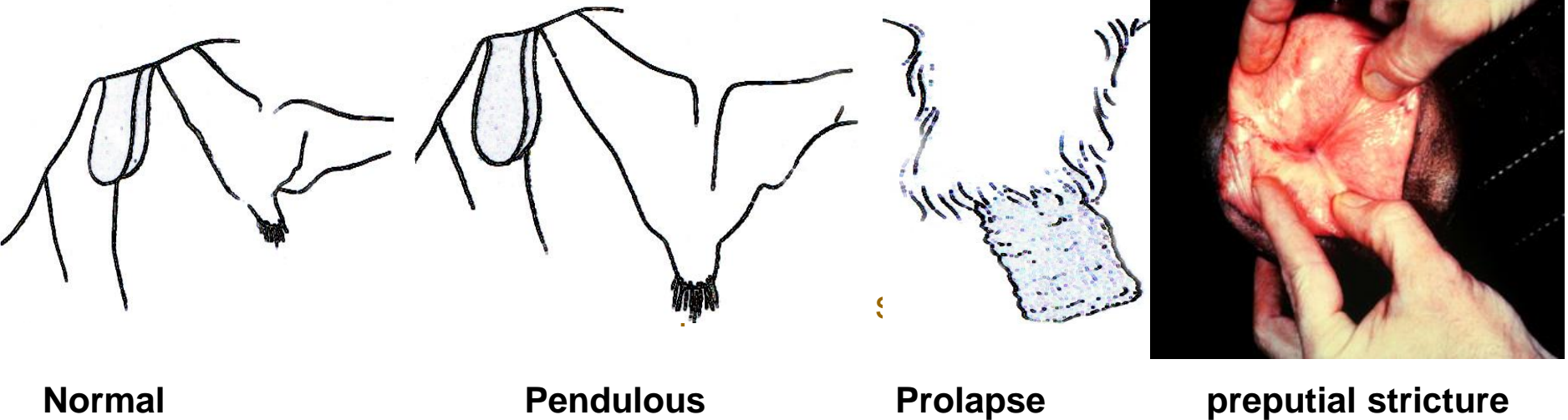
**Rear View**

## **Structural soundness** contd...

- **Hooves of structurally sound bull : Even**
- **Need for hoof trimming : Faulty leg conformation**
- **Structurally unsound bull : libido worsens with age**
- **Fault in the rear legs are heritable**

# Reproductive system

## Prepuce



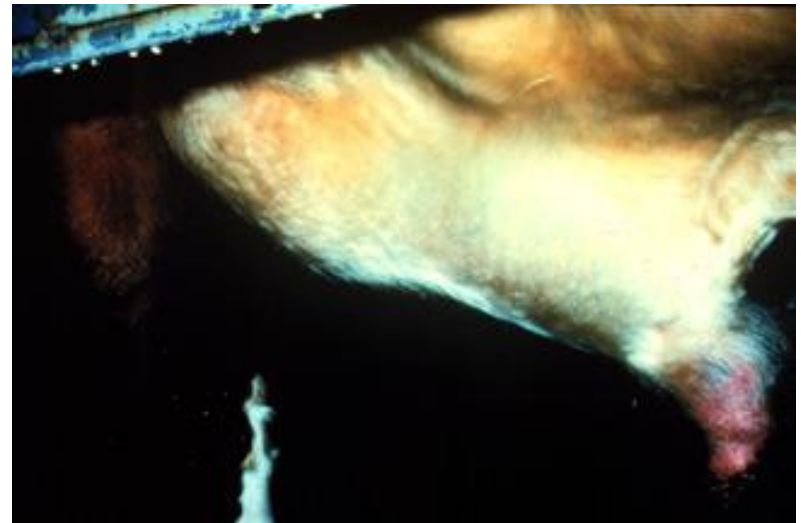
It is examined for : any lesions / lacerations / injuries

Pendulous prepuce are more prone to injuries and prolapse

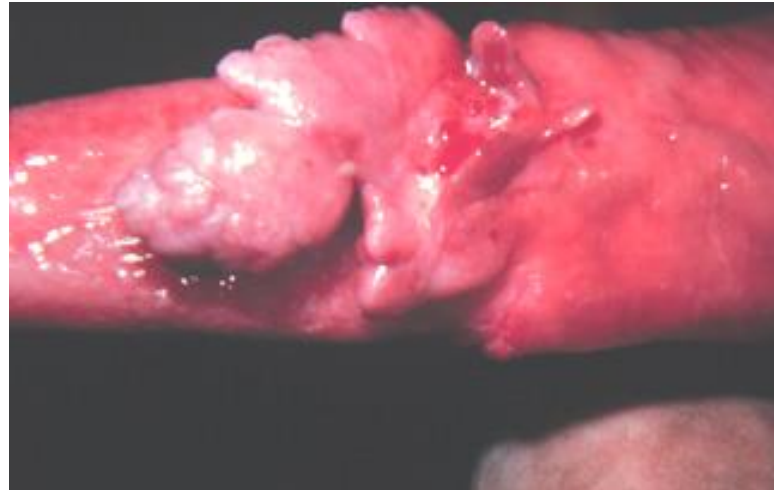


# Reproductive System

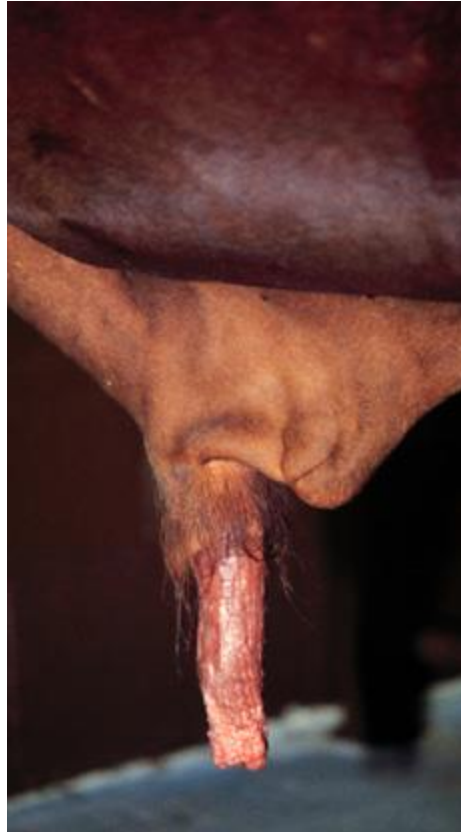
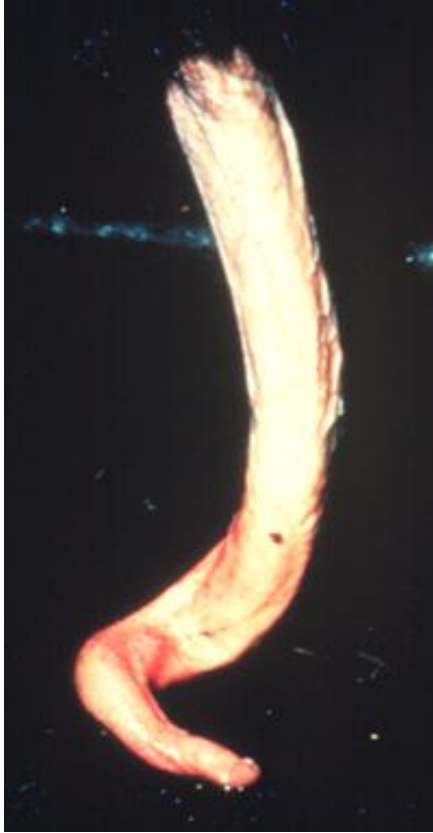
**Penis : Best examined in sexually excited condition**



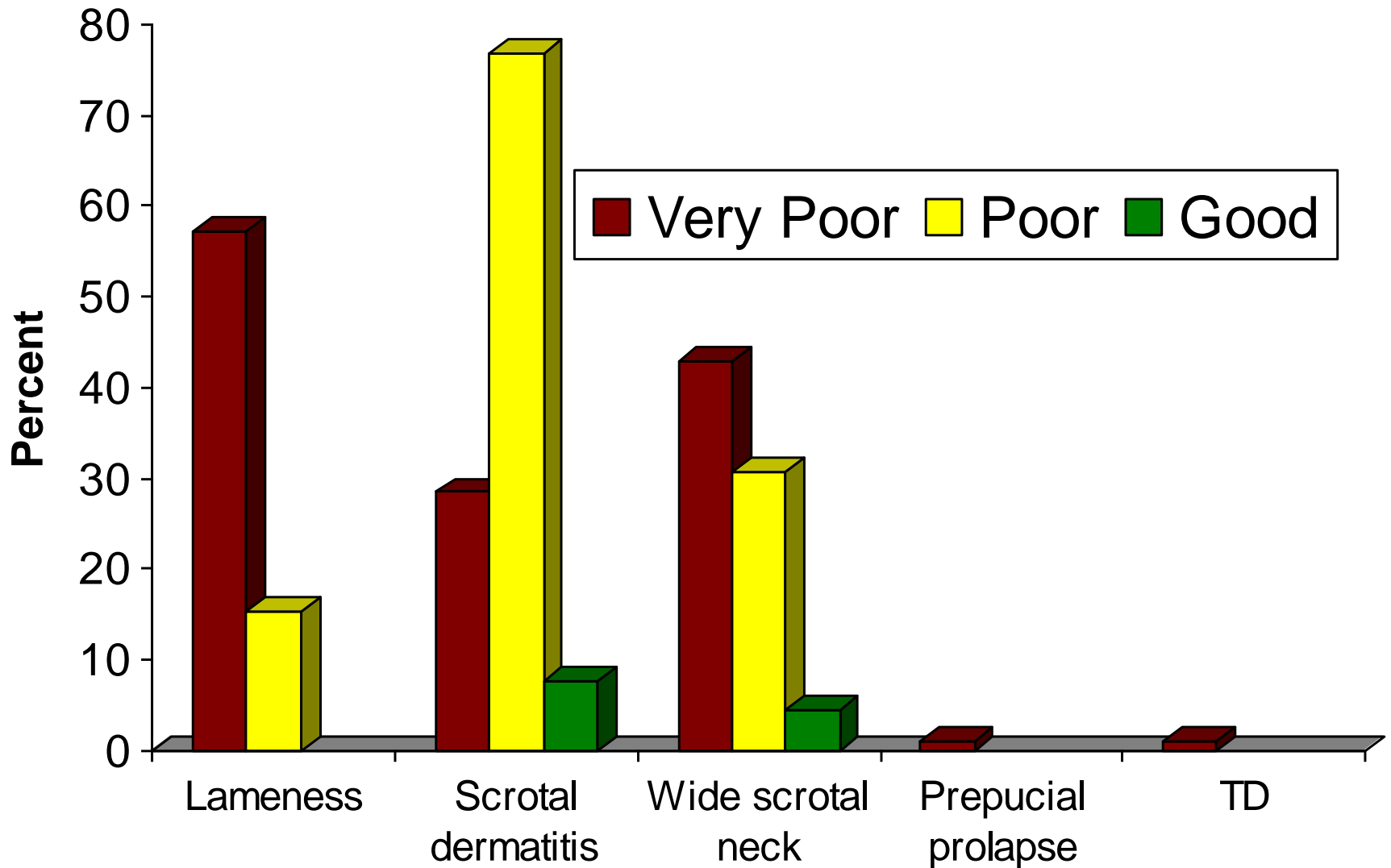
# Reproductive System



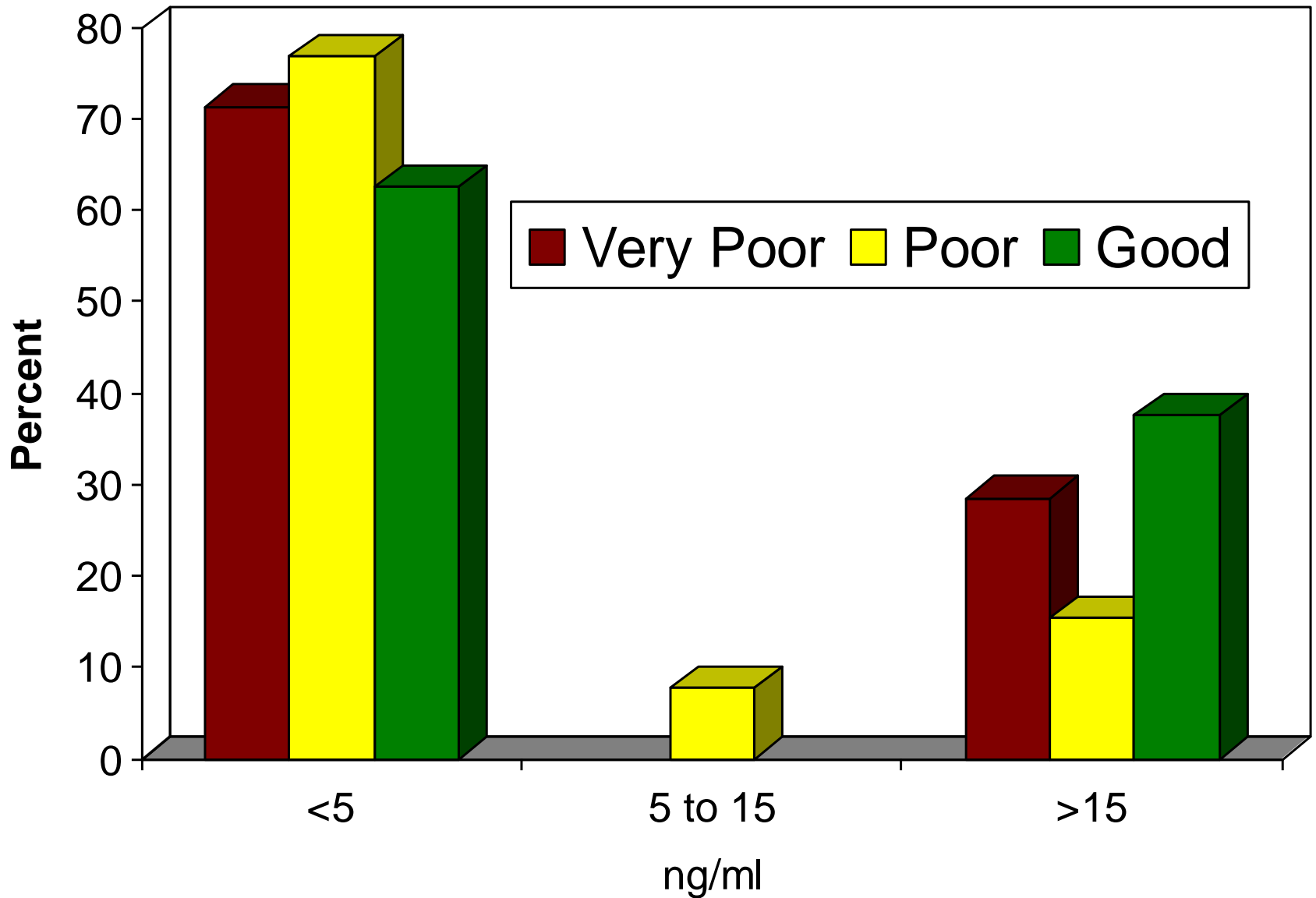
# Reproductive System



# Factors associated with libido in buffalo Bulls



# Testosterone levels in relation to libido



## E/T and T3/T4 ratios in Poor libido bulls

Higher E/T ratio - 5-30

Lower T3/T4 ratio - 2.7-15

# Sex Ratio

**Male to Female  
Ratio**

**Estrus detection**

1:20

98%

1:30

90%

1:60

64%

1:100

51%

# **Social Hierarchy**

**Older bulls (>4 yrs) : dominant**

**May decrease herd fertility**

**Dominant bulls may not have better libido**



# Factors affecting libido

- Polygamous - distribute services among females
- Competition - increases sexual response
- Prestimulation - increases sexual desire
- Greatest single stimulus - immobile rump or similar object

## Factors affecting libido

- **Excessively apprehensive or agitated bulls**
- **Immediately after mating, electroejaculation**
- **Stress – vaccination, parasite control measures,  
Adverse weather conditions - extreme heat, cold**

# Conclusions

1. General Health
2. Age
3. Structural fitness
4. Reproductive fitness
5. Endocrine milieu
6. Stress stimulus